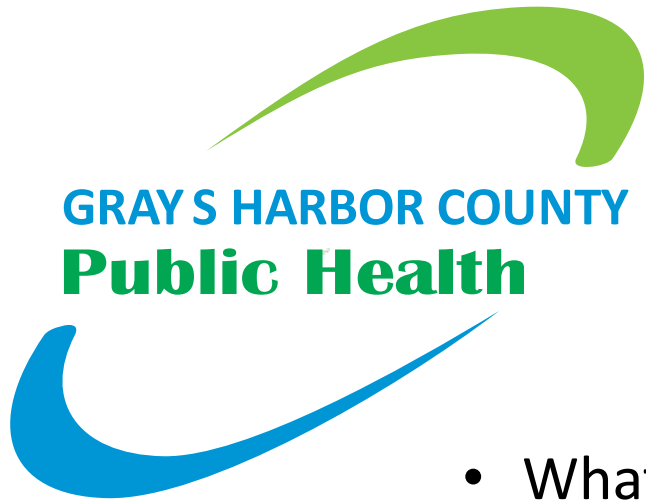


# Grays Harbor County Board of Health Orientation



# Topics

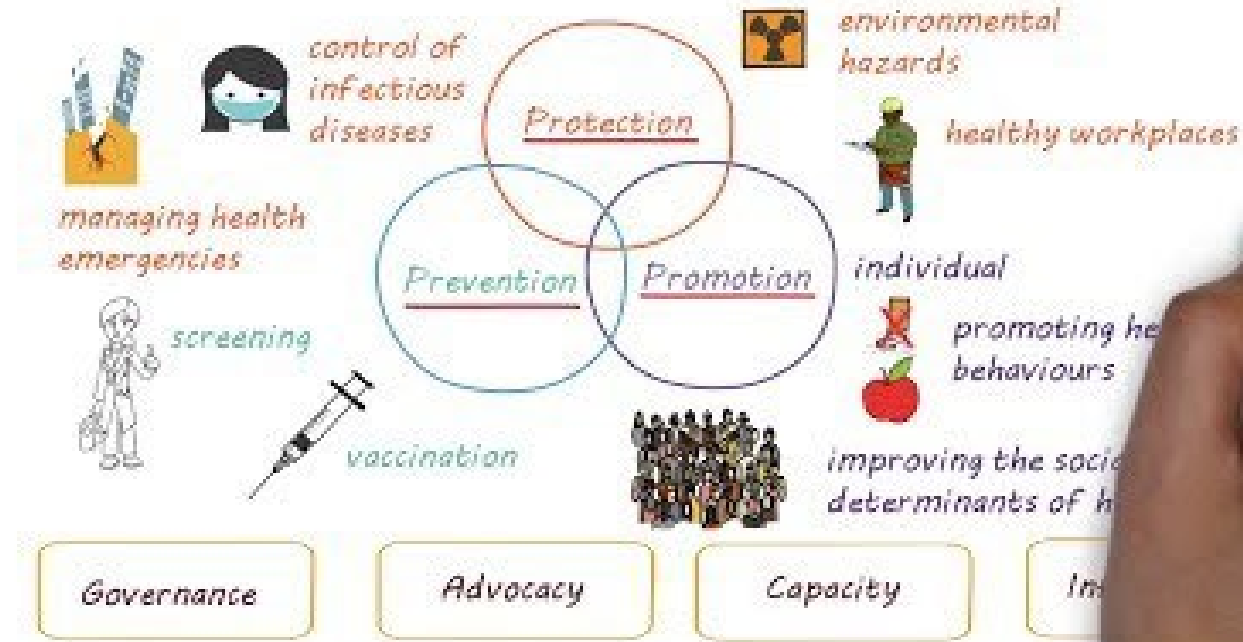
- What is public health?
- 10 essential services
- Public health vs. health care
- State Local Health Jurisdictions
- Grays Harbor County Public Health funding streams
- Drivers of local Public Health work
- Local Boards of Health roles
- Local public health officials – Director and Health Officer
- Lines of authority
- Questions/Answers

# Public health - defined

The science of  
protecting and  
improving health  
of people and  
their communities

**Public Health is an essential service  
guaranteed to all residents by  
Washington state law. *RCW 43.70.514 -  
Public Health Definitions.***

# WHAT IS PUBLIC HEALTH?

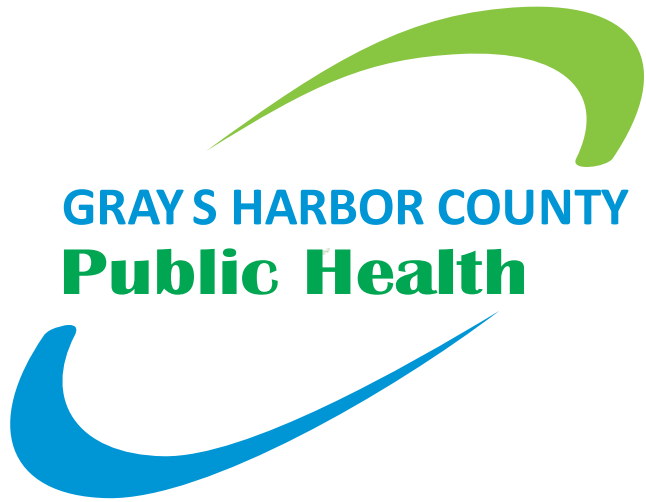




# THE 10 ESSENTIAL PUBLIC HEALTH SERVICES

*To protect and promote the health of all people in all communities*

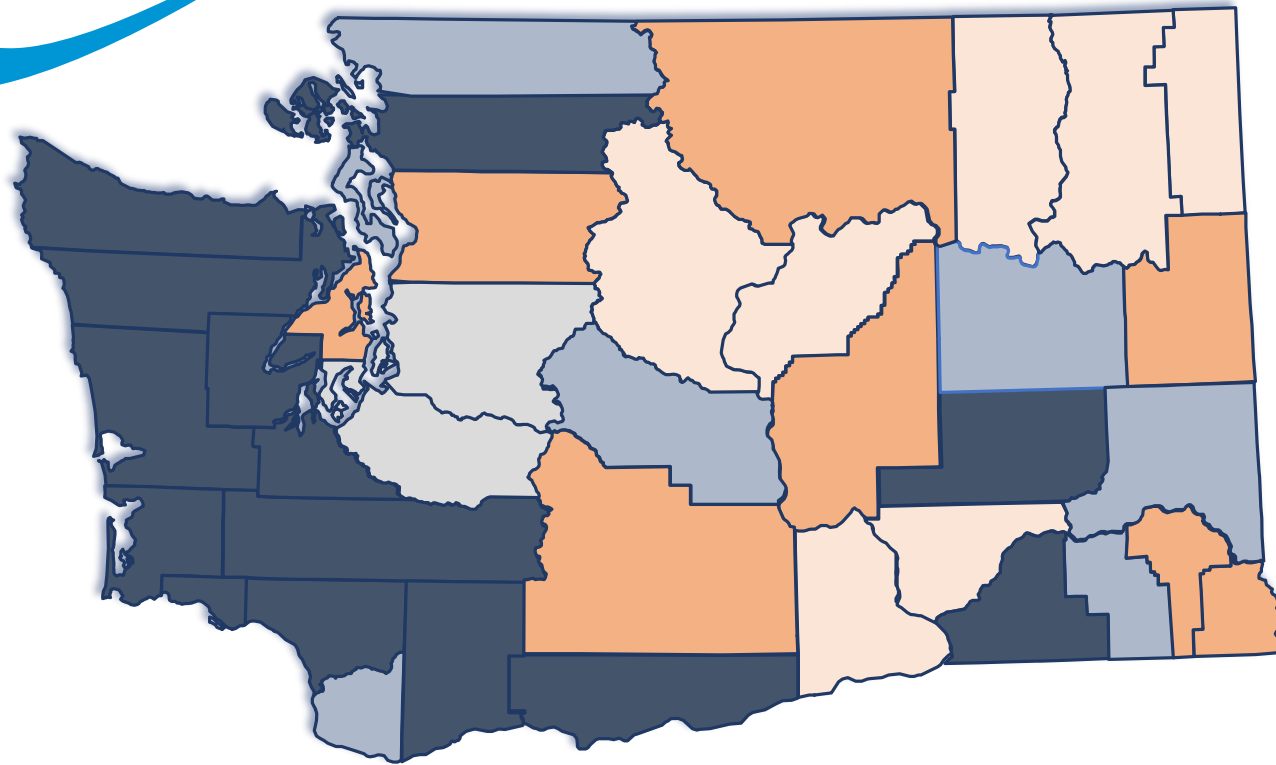




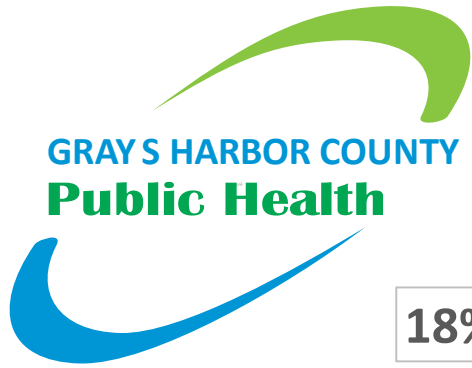
# Public Health is NOT Health Care

- Public health works to address the larger impacts to health outcomes;
  - but not the outcomes themselves
- Public health efforts support individual medical care and treatment;
  - Behavioral health services such as counseling and treatment are NOT public health
  - Community prescription take back programs ARE public health
  - Preventative visits to a doctor are NOT public health
  - Community gardens, tobacco prevention groups in schools ARE public health

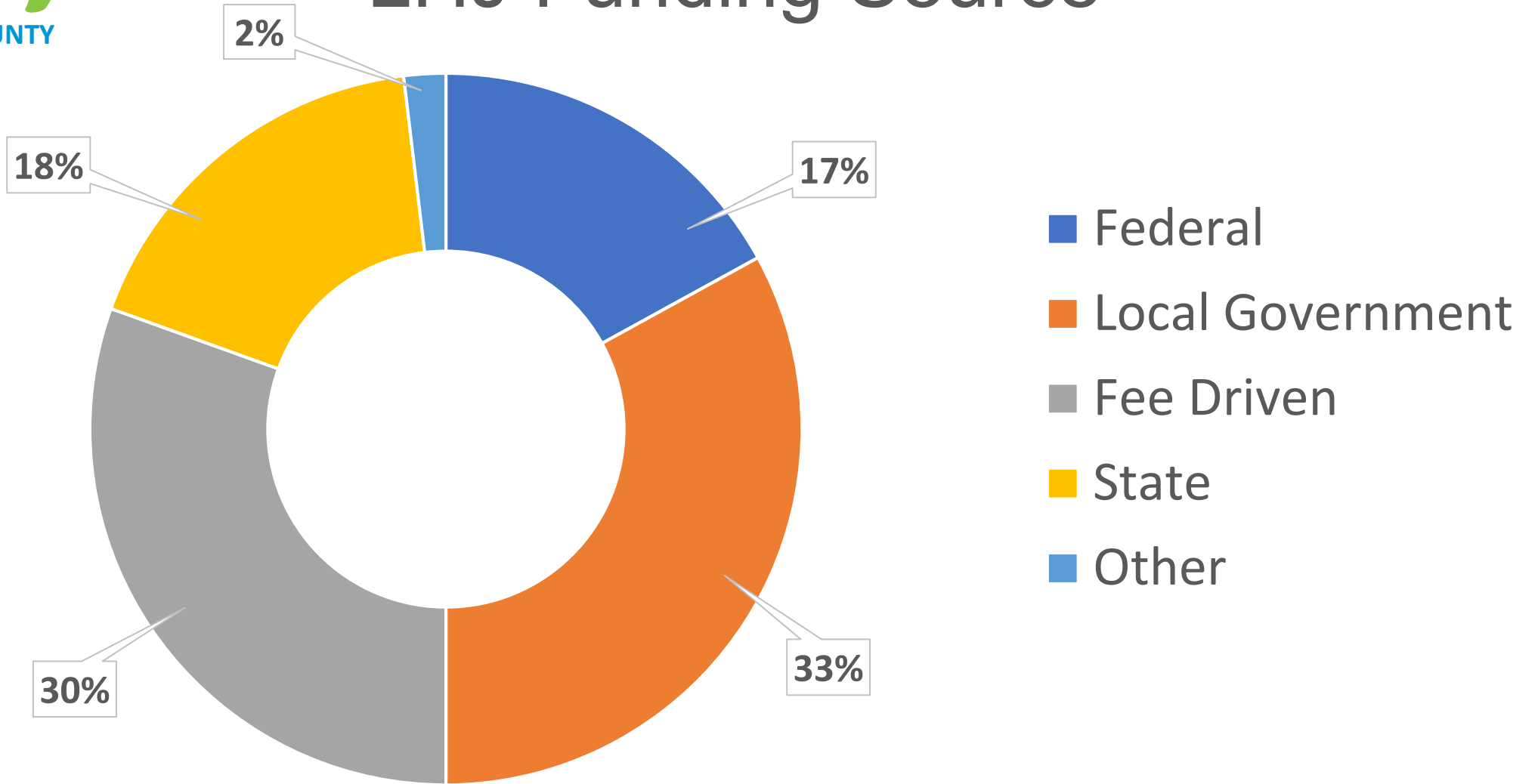
# WA State Local Health Jurisdictions



- County Health & Human Services
- County Health Department
- City-County Health Department
- Multi-County Health District
- Single County Health District



# LHJ Funding Source



Source: WA DOH, 2018 Local Health Jurisdiction Funding Report





# Drivers of LHJ work

- Laws (RCW) passed by the Washington State Legislature
- Rules (WAC) by state agencies (i.e. WA SBOH, WA DOH)
- Federal block grant focus and needs (i.e. MCH block grant, preparedness)
- Local needs and priorities (CHA/CHIP)
- Categorical funding via competitive grant processes

# RCW Title 70 - Public Health & Safety

70.05 – Local health departments, boards, health officers

70.08 – City-County Departments

70.46 – Health Districts

70.12 – Public health funds



70.24 – Control and treatment of sexually transmitted diseases.

70.26 – Pandemic influenza preparedness

70.28 – Control of tuberculosis

70.58 – Vital statistics

70.118 – On-site sewage disposal systems

More extensive list: <https://app.leg.wa.gov/rcw/default.aspx?cite=70>

# LBOH Primary Roles

## Policy & Administration

Enforce state and local laws and rules

Control and prevent disease

Prevent and control nuisances

Appoint local health officer

Establish appropriate fees

*RCW 70.05 "Each local board of health shall have supervision of ALL matters pertaining to the preservation of life and health of the people within its jurisdiction..."*



# LBOH Primary Roles

## Community Engagement

Educate public

Promote health and safety

Participate in health planning

Gather input and feedback

Serve as a point of contact

**RCW 70.05** *“Each local board of health shall have supervision of ALL matters pertaining to the preservation of life and health of the people within its jurisdiction...”*



# Working with your Local Health Officials

*“The administrative officer shall act as executive secretary and administrative officer of the local board of health, and shall be responsible for administering the operations of the board...except for duties assigned to the health officer.”*

## Public Health Director (Mike McNickle):

- Budget and finance
- Staffing and oversight
- Program and service delivery
- Reporting and communication

RCW 70.05.070  
WAC 246-100-036  
WAC 246-101-505

## Environmental Health Director (Jeff Nelson):

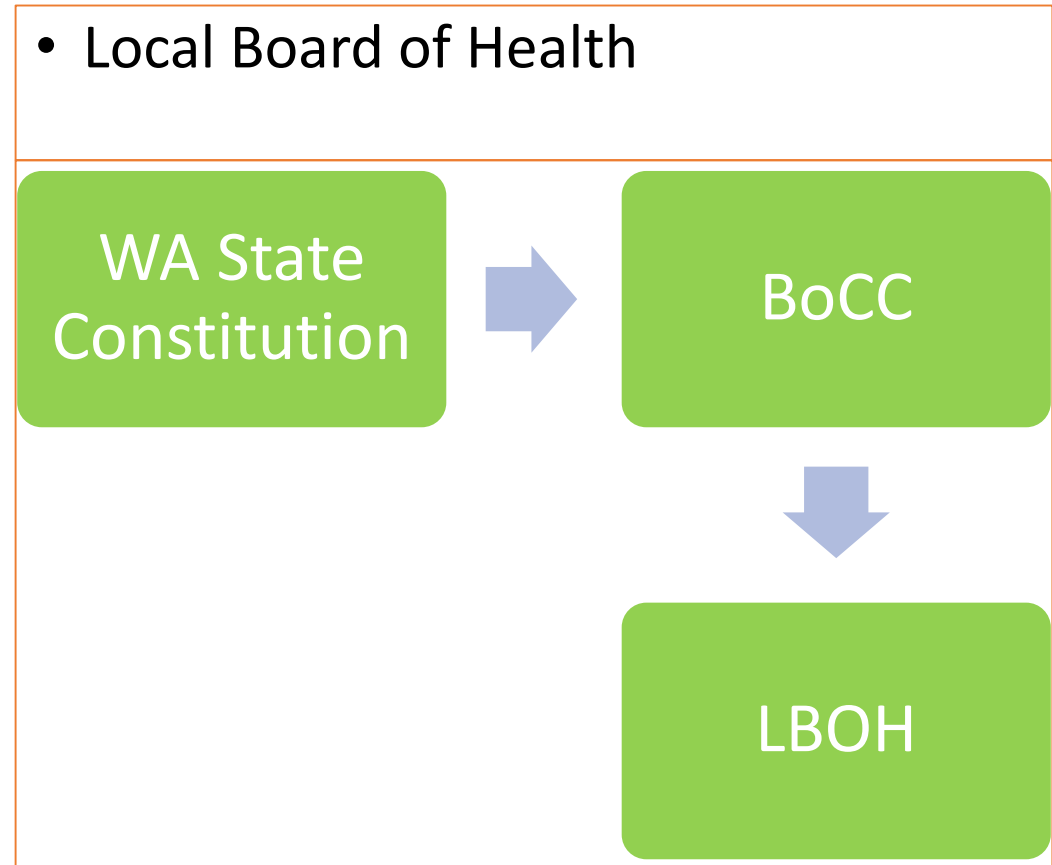
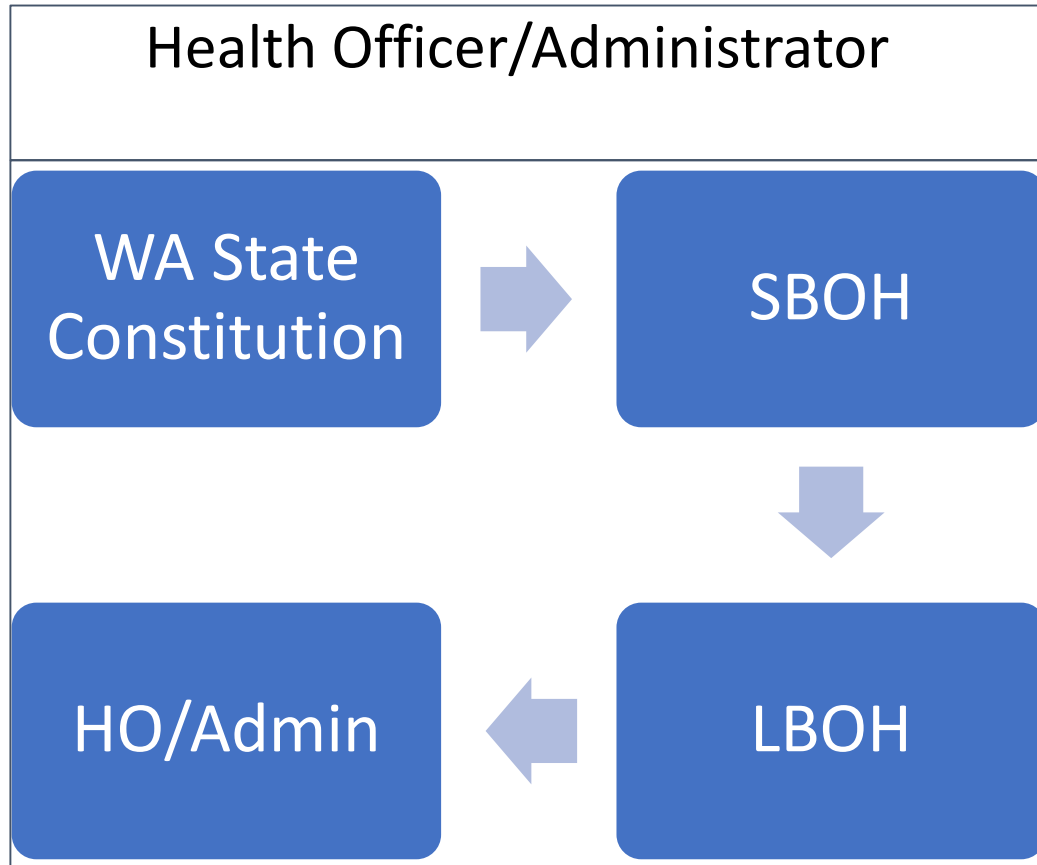
- Budget and finance
- Staffing and oversight
- Program and service delivery
- Reporting and communication

## Health Officer (Dr. Bausher):

- Threats and emergencies
- Health hazards
- Enforcement and orders

*“The local health officer shall control and prevent the spread of any dangerous or contagious or infectious disease that may occur in his/her jurisdiction”*

# Lines of Authority – Where do LHJ powers come from?





# Questions?

# Resources

- National Association of Local Boards of Health (NALBOH) [www.nalboh.org](http://www.nalboh.org)
- State Board of Health [www.sboh.wa.gov](http://www.sboh.wa.gov)
- National Association of County and City Health Officials (NACCHO)  
[www.naccho.org](http://www.naccho.org)



# Contact

*Grays Harbor County Public Health*  
GHBOH@graysharbor.us

