

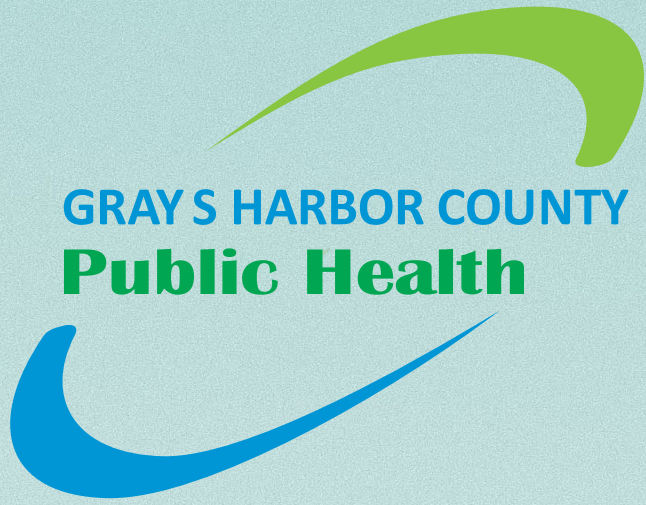
# HEALTHY PLACES

## Division Overview

January 26, 2023



# HEALTHY PLACES



GRAY'S HARBOR COUNTY  
Public Health

# HEALTHY PLACES

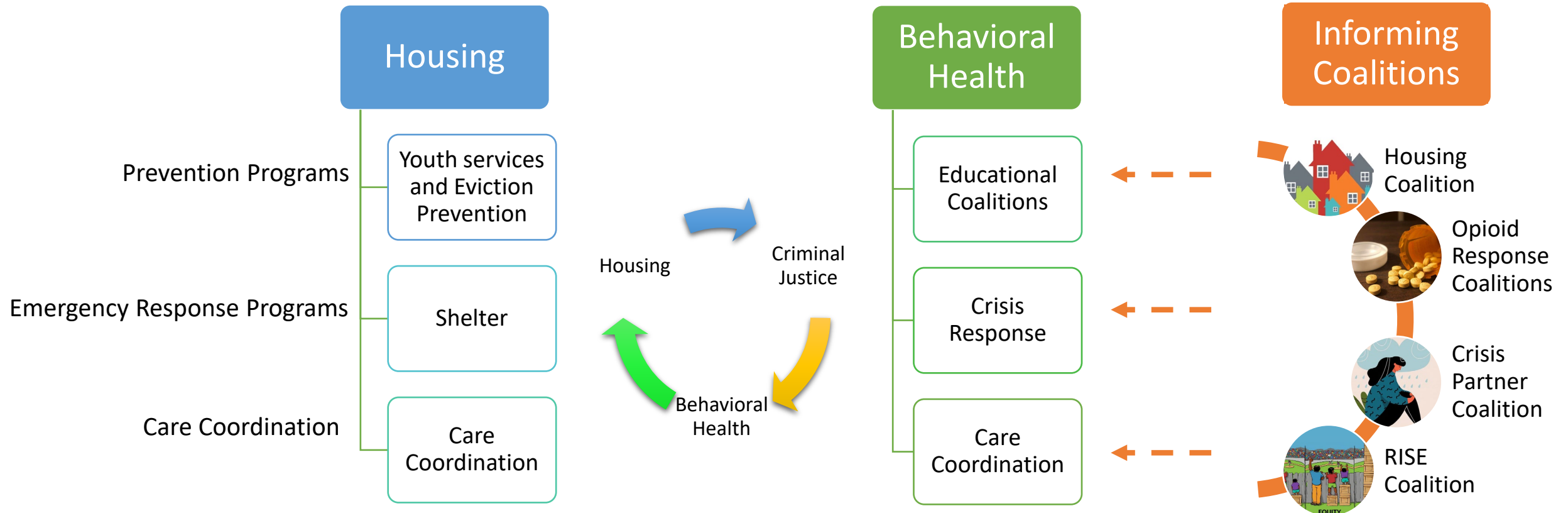
*We have a vision that Grays Harbor is a place all people can be healthy throughout their lives.*

We are working to make barriers to health rare, brief, and one-time.



# HEALTHY PLACES

# The Healthy Places Systemic Response



# 2022 by the Numbers

- 66 contracts drafted and shepherded through the approval process
- 13 Request for Proposals/Request for Information/Request for Qualifications published and processed
- 14 grant applications submitted
- 11 site visits/grant monitoring/audits - with only minor findings/recommendations identified
- **\$2,636,884** in new grant funds brought into the department and community
- **\$12,507,253** in total grant funds managed
- 22 funding streams managed
- 194 households provided shelter
- 235 households permanently housed
- 1,253 potential evictions prevented
- 3 small businesses assisted with COVID fiscal impacts
- 50 leaders and youth engaged in prevention events
- 100+ school personnel trained to administer Naloxone
- 126 incarcerated persons connected with medication, counseling, and/or re-entry services
- 7 community leaders provided training and capacity building services through Women's Justice Circle
- Countless community and partner events facilitated and attended
- Countless system improvements made to increase efficiency and effectiveness



Homeless and Affordable Housing  
*Kimberly Stoll French*



Homelessness Prevention and Shelter Services  
*Natali Burgess*



Health Equity  
*Jessica Molina*



Substance Use Prevention  
*Haley Falley*



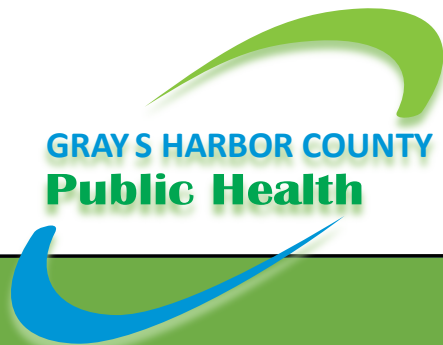
Substance Use Prevention  
*Rebecca Ruiz*



Overdose response and Behavioral Health coordination  
*Jerry Rajcich*



Jail System of Care  
*Wilma Weber*



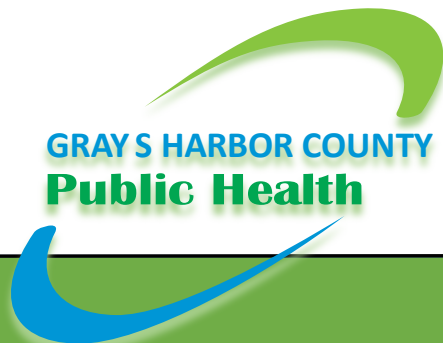
# Homeless Housing Services

System performance reports can be found at [www.healthygh.org/directory/housing](http://www.healthygh.org/directory/housing)

Services Only	Emergency Shelter	Transitional Housing	Homelessness Prevention	Rapid Rehousing	Permanent Supportive Housing
<ul style="list-style-type: none"><li>• Coordinated Entry</li><li>• Diversion</li><li>• Landlord Liaison</li><li>• Street Outreach</li></ul>	<ul style="list-style-type: none"><li>• Domestic Violence Shelter</li><li>• Youth Shelter</li><li>• 3 units of family shelter</li><li>• Seasonal:<ul style="list-style-type: none"><li>• Cold Weather shelter (provider/site dependent)</li></ul></li><li>• Hotel vouchers</li></ul>	<ul style="list-style-type: none"><li>• Young Adults Transitional Projects</li><li>• Domestic Violence supportive housing</li></ul>	<ul style="list-style-type: none"><li>• Housing Essential Needs clients</li></ul>	<ul style="list-style-type: none"><li>• Housing Essential Needs clients</li><li>• Rapid Rehousing (general)</li><li>• Rapid Rehousing for Young Adults</li><li>• Rapid Rehousing for Families</li><li>• Rental assistance for Therapeutic Court clients</li><li>• Rapid Rehousing for DV survivors</li></ul>	<ul style="list-style-type: none"><li>• Permanent Supportive Housing for Chronically Homeless Families</li><li>• Permanent Supportive Housing for Chronically Homeless Clients</li></ul>

# Affordable Housing Projects

- Affordable Housing Pipeline
  - The Grays Harbor Affordable Housing Pipeline (AHP) is organized to provide leadership and coordination in publicly funded affordable housing projects in Grays Harbor County in accordance with Grays Harbor County's 5-year Plan to End Homelessness. Stakeholders/membership includes all local municipalities, homeless service providers, housing developers, behavioral health providers, and Grays Harbor County
  - The Pipeline helps coordinate funding opportunities using local dollars that align with priorities and timing of other, larger funding like Community Development Block Grant, Housing Trust Fund, and Low-Income Tax Credits
- Currently working with partners to develop/implement four projects:
  - CCAP Modular Housing (technical assistance only) – 16 units
  - HOPE Re-entry housing – 16 units/rooms
  - Habitat for Humanity - 3 tiny homes
  - CCAP Rural Modular Housing (ARPA) – 2-12 units



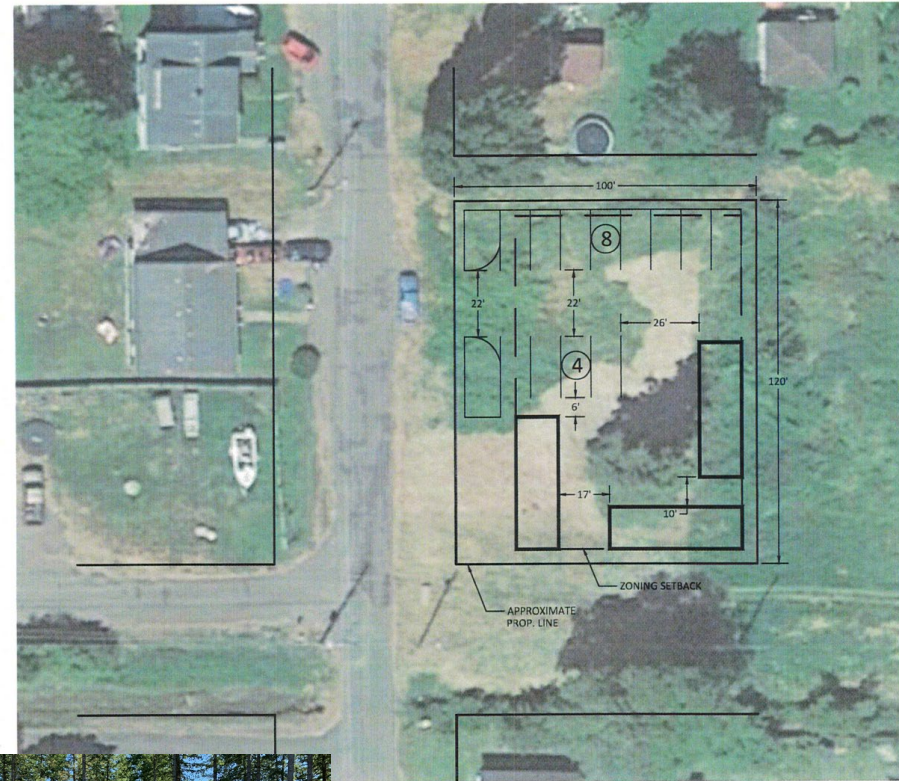
# coastal Community Action program

Introducing the ultimate in transitional housing:

**WOLF** | INDUSTRIES

*Designed to make the most of natural light, energy efficiency, and spacious enough for the whole family, this really is a place where your home can be the castle to your future goals.*

*Welcome To Your New Home...*







# Cold Weather Shelter

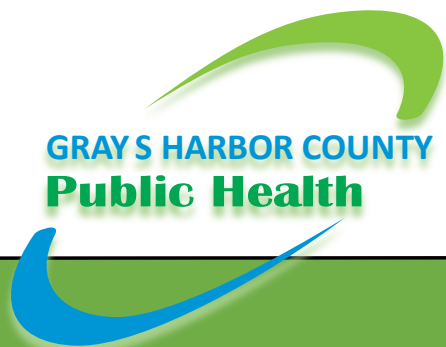
- Stakeholder interviews
- Review of funding sources and guidelines
- “Think Tank” committee
- RFP and contract administration
- Technical assistance/subrecipient monitoring and reporting
- Current providers:
  - Chaplains on the Harbor (Westport)
  - Chaplains on the Harbor (Central Grays Harbor) – *in process*
  - The Moore Wright Group – *in process*
  - Coastal Community Action Program Hotel Vouchers

# Homelessness Prevention

Fund Source	Timeline	Funding distributed	Households served	Contractor(s)
ERAP 1.0	10/01/2020 – 01/31/2021	<b>\$1,150,878 in <i>direct assistance</i>.</b>	408	Coastal Community Action Program
TRAP	07/01/2021 – 12/31/2021	<b>\$4,638,498 in <i>direct assistance</i>.</b>	950	Coastal Community Action Program
ERAP 2.0	01/01/2022 – 06/30/2023	<b>\$5,515,146 in <i>direct assistance</i>.</b>	1,142	Coastal Community Action Program, Equity Institute, and LiveStories
CDBG CV	07/01/2021 – 06/30/2023	<b>\$404,932 in <i>direct assistance</i>.</b>	302	Coastal Community Action Program
CHG Eviction Prevention	07/01/2023 -	<b>Approximately \$600,000 in direct assistance</b>	TBD	TBD



# Health Equity



HEALTHY PLACES



# Women's Justice Circle

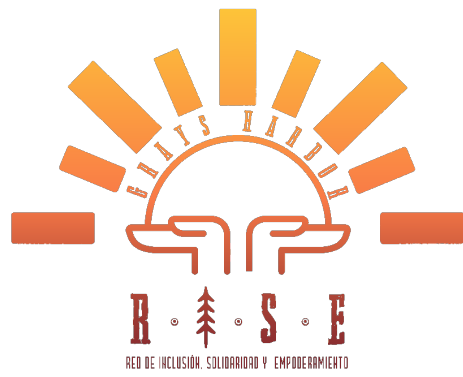
- In existence as of January 2019
- Grassroots volunteer community "Circle" or Coalition
- WJC strives to bring mental health awareness to the Latino/Spanish-Speaking community of Grays Harbor
- Collaboration between GHCPH and WJC – January 2020



# Women's Justice Circle ...in the Community

- Build community trust
  - Outreach events – BINGO and Painting Parties
  - Volunteer/Collaborations events – CCS, TMWG, etc.
- Connect with behavioral health partners to increase access
  - Promote bilingual material
  - Coordinate workshops in Spanish
- End goal: Collective community effort to destigmatize mental health
  - “Bridge people to services and services to people”





# Grays Harbor RISE

- Initiated as a COVID-19 health equity response
- Grays Harbor RISE – Officially launched Summer/Fall 2021
- The Grays Harbor RISE Coalition brings together agencies serving the Spanish speaking and Latino community members of Grays Harbor County. As a network, we are grounded by the values of inclusion, solidarity and empowerment. Our member agencies strive to serve the needs of the Latinx population with integrity, respect, and recognition of the rich and diverse cultures and traditions in our community.
- The GH RISE coalition is born out of a desire from agencies serving Spanish speaking and Latinx clients to better serve and communicate with the growing Latino community in Grays Harbor County.
- Our team is composed of members from each of our member agencies, who identify and are strongly rooted in their Latino heritage.



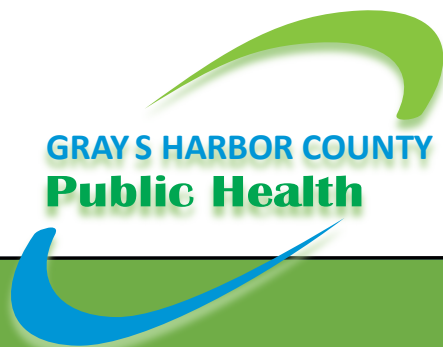
# Partnerships with Grays Harbor RISE

- Catholic Community Services
  - Food Distribution Events
- Coastal Community Action Program
  - Language Access
- Grays Harbor County Public Health
  - COVID-19 Information
  - COVID-19 Vaccine Education
  - Community-Based Vaccine Clinics
- Grays Harbor County Emergency Management
  - 2022 Flood Recovery/Response
  - Resource Distribution Drive-Thru Event
- Grays Harbor College
  - Storytelling Video Project





# Substance Use Prevention





Community Prevention and Wellness Initiative Coalitions – Grays Harbor

# How are we making a difference?



- Providing education to youth, parents, community members, and policy makers about the power of prevention.
- Coalitions are working to raise awareness in their communities about the consequences of alcohol and other drug abuse.
- Students are learning how alcohol advertising can influence their decisions, and how to make healthy choices.
- Parents are learning skills to increase family bonding.
- Young people have more opportunities to be involved in positive activities.
- Students participating in the school-based program
  - Project Success had a 23% decrease in binge drinking, 23% decrease in marijuana use, and a 29% decrease in the percentage of classes failed

# Youth Cannabis and Tobacco Prevention Program

- **CHOICE Regional Health Network**

- Increase youth perception of harm by addressing community norms and increasing family support, by organizing a Regional Network, and by educating youth, parents, and retailers to prevent the initiation and reduce the use of cannabis and tobacco by youth.

- **Outcomes**

- Increase awareness
- Increase positive social norms/new policies
- Decrease availability
- Increase education
- Create healthy beliefs about standards by parents & adult influencers
- Increase enforcement of policy norms: alternatives to suspensions
- Outreach to influencers in the community

# Opioid Surveillance and Response

- Support local Public Health Liaison linkages between State and local Opioid response plan. Support local improvement of opioid plan using the most current State Opioid Response.
- Create local protocols to activate the DOH opioid overdose response team and determine how to contribute when activated.
- Coordinate with infectious disease prevention, identification, and response for people who use drugs.
- Work with critical partners in the behavioral health continuum of care including prevention, intervention, crisis, and after-care resources to increase collaboration, communication, and systems-level planning.
- Training local school staff on administration of Naloxone and providing kits/TA with policies
- NEW in 2023:
  - Support County/Health Department processes and coordination of opioid settlement planning, implementation, and evaluation
  - Support for expanded Overdose Awareness Day event(s) throughout the County

# Behavioral Health System Coordination

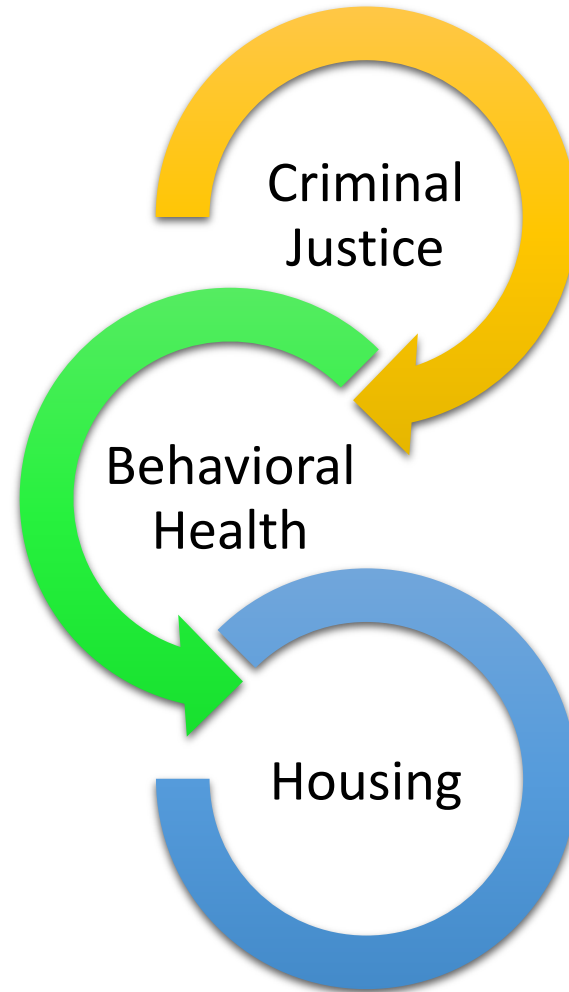
- Community Assessment and planning
  - CHIP/CHA
  - BH Gap Analysis
- Convening/Coordinating
  - Interlocal Leadership committee
  - Familiar Faces
  - Community Partner Coalition
- System surveillance/Data Analysis/Troubleshooting
- NEW: identifying next steps/priorities from assessments
  - Grant identification/writing (SUD Peers in ED grant was a success!)
  - Drafting options for local funding investment (Request for Proposals)
  - Partnering/convening on projects within Public Health scope (i.e. resource guide, workforce development, etc.)

# Jail System of Care for individuals with SUD

- Enhancements in jail medical services to include Medications for Opioid Use Disorder (MOUD), Substance Use Disorder Assessments, Substance use Disorder Programming, and Re-entry coordination
- System of care now expanded to serve participants in Aberdeen City Jail, Hoquiam City Jail and Grays Harbor County jail
- Partners include Community Integrated Health Services, Coastal Community Action Program, and Grays Harbor Treatment Solutions
- Of the 82 individuals connected to re-entry supports (March 2021 – November 2022)
  - 23% remain in custody
  - 77% have released to community
    - 63% maintaining recovery
    - 27% employed
    - 59% stably housed
    - 8% recidivism/new charges
- Full list of newsletters, year-end, and project-end reports available @ [www.healthygh.org/directory/opioid](http://www.healthygh.org/directory/opioid)

# Intersecting Systems and Compounding Challenges

- Generational Trauma/Adverse Childhood Experiences
- Barriers to addressing issues through mainstream healthcare and crisis response systems
- Stigmatization of individuals living through a behavioral crisis



- Gaps in behavioral health/homeless crisis system leads to increased law enforcement involvement for minor offenses
- Gaps in support services upstream and after release can lead to cyclical involvement
- Stigma and barriers of criminal record to housing/employment
- Lack of available housing units
- Rents rising faster than wages
- Barriers to accessing housing (criminal history, eviction history, etc.)
- Connection to appropriate supports to increase overall stability



# The Healthy Places Systemic Response

**Crisis Prevention Programs**  
*Programs seek to educate community, promote the anti-stigmatization of poverty, and support people to make healthy choices*



Youth Housing Continuum  
 Eviction Prevention  
 Rental Assistance



Youth tobacco and cannabis prevention  
 MyTown and Harbor Strong Coalitions  
 Women's Justice Circle



**Crisis Response Programs**  
*Programs seek to keep clients alive, support clients to make healthier choices, and facilitate connections to care coordination and upstream services*

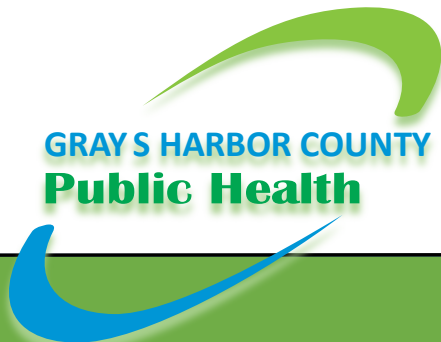
Emergency Shelter  
 Street Outreach

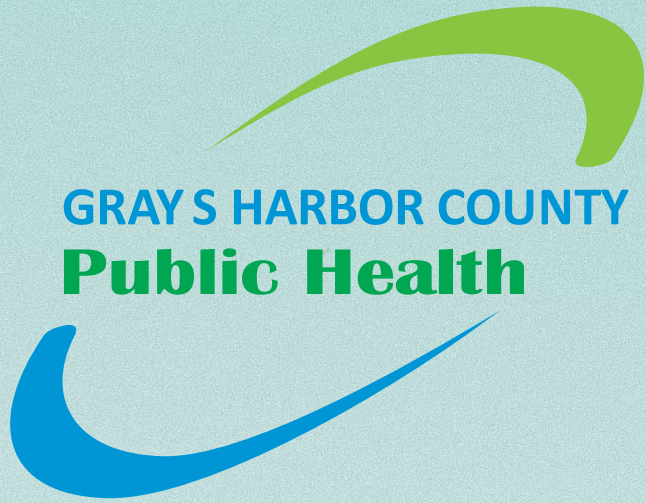
Quick Response Team  
 Crisis Services

**Care Coordination**  
*Programs seek to resolve client's crisis through connections to permanent housing, mental health services, and SUD treatment*

Care Coordination  
 Rental Assistance  
 Supported Employment

Care Coordination  
 Treatment Services in Jail  
 Jail Re-entry Planning





GRAY'S HARBOR COUNTY  
**Public Health**

# HEALTHY PLACES

Healthy Places Division Manager  
Cassie Lentz  
[clentz@graysharbor.us](mailto:clentz@graysharbor.us)  
360-500-4049

Check out all the detailed data/reports at [www.healthygh.org](http://www.healthygh.org)



# HEALTHY PLACES