

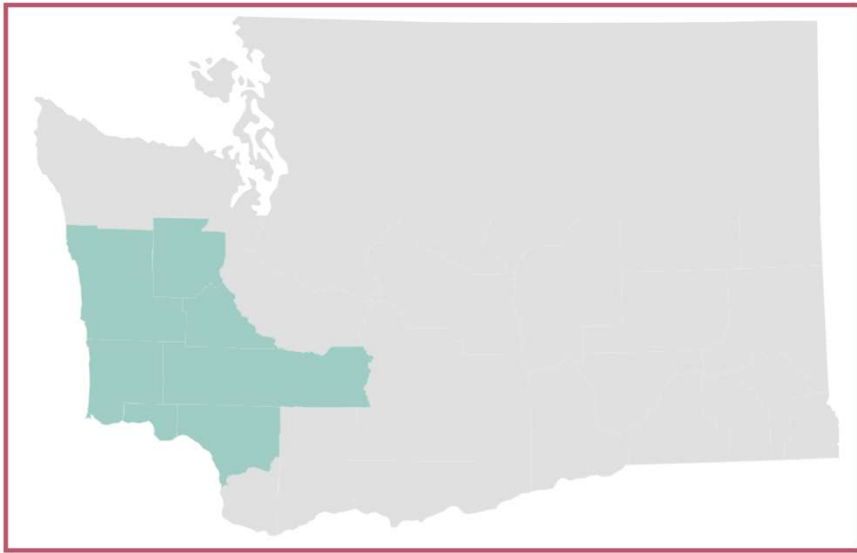
**WHO I AM**

**JP ANDERSON, CEO**



# WHO WE ARE

We are the Accountable Community of Health (ACH) serving the Central Western Washington region.



We serve everyone in the jurisdictions of Thurston, Mason, Lewis, Cowlitz, Pacific, Grays Harbor, and Wahkiakum counties and the sovereign nations of the Chehalis, Cowlitz, Nisqually, Quinault, Shoalwater Bay, Skokomish, and Squaxin Island Tribes.

## WHAT

ACHs are regional organizations that work with their communities on health care and social needs-related projects and activities.

## WHY

Nine ACHs were established by the Health Care Authority to be neutral conveners, investors, and coordinating bodies between the health care delivery system and local communities.

## HOW

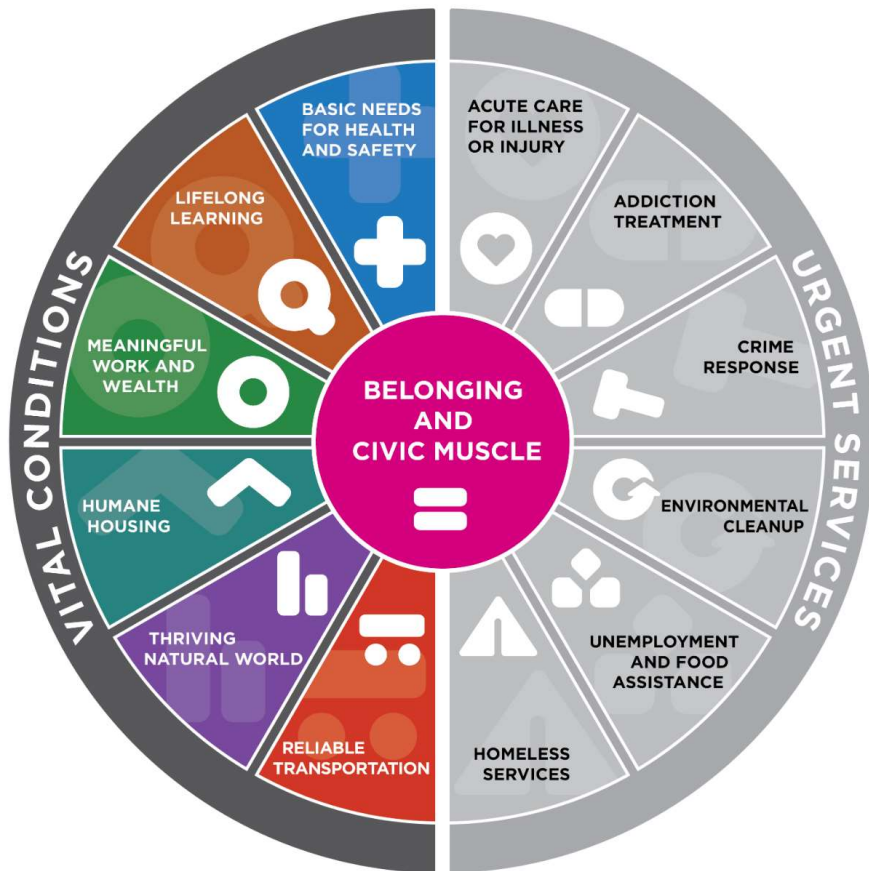
ACHs receive funds through the Medicaid Transformation Project (MTP) to transform health systems. We distribute these funds throughout the region to support local health improvement projects.

# WHERE WE'RE GOING: THE VITAL CONDITIONS FRAMEWORK



	<b>THRIVING NATURAL WORLD</b>	<i>Sustainable resources, contact with nature, freedom from hazards</i> Clean air, water, soil; healthy ecosystems able to sustainably provide necessary resources; accessible natural spaces; freedom from the extreme heat, flooding, wind, radiation, earthquakes, pathogens
	<b>BASIC NEEDS FOR HEALTH + SAFETY</b>	<i>Basic requirements for health and safety</i> Nutritious food, safe drinking water; fresh air; sufficient sleep; routine physical activity; safe, satisfying sexuality and reproduction; freedom from trauma, violence, addiction and crime; routine care for physical and behavioral health
	<b>HUMANE HOUSING</b>	<i>Humane, consistent housing</i> Adequate space per person; safe structures; affordable costs; diverse neighborhoods (without gentrification, segregation, concentrated poverty); close to work, school, food, recreation, and nature
	<b>MEANINGFUL WORK + WEALTH</b>	<i>Rewarding work, careers, and standards of living</i> Job training/retraining; good-paying and fulfilling jobs; family and community wealth; savings and limited debt
	<b>LIFELONG LEARNING</b>	<i>Continuous learning, education, and literacy</i> Continuous development of cognitive, social, emotional abilities; early childhood experiences; elementary, high school, and higher education; career and adult education
	<b>RELIABLE TRANSPORTATION</b>	<i>Reliable, safe, and accessible transportation</i> Close to work, school, food, leisure; safe transport; active transport; efficient energy use; few environmental hazards
	<b>BELONGING + CIVIC MUSCLE</b>	<i>Sense of belonging and power to shape a common world</i> Social support; civic association; freedom from stigma, discrimination, oppression; support for civil rights, human rights; civic agency; collective efficacy; vibrant arts, culture, and spiritual life; equitable access to information; many opportunities for civic engagement (voting, volunteering, public work)

# WHERE WE'RE GOING



Our goal is to develop a regional network that distributes leadership among partners who will work to create a coordinated portfolio for our region.

The portfolio will leverage the unique strengths and assets of our communities – and will balance investments in urgent services and vital conditions.

# OUR STORIES



**THE STORY OF  
HOW WE FOUND  
VITAL  
CONDITIONS**

**THE STORIES  
WE TELL  
OURSELVES**

**THE STORY WE  
CAN WRITE  
TOGETHER**